

19

(marché de travail)

+

+

(Paramètres)

:(Croissance économique) .1

**PIB**  
(2000-1995) :1  
%

2000	1999	1998	1997	1996	1995	
4.8	3.5	2.8	4.2	4.0	3.6	
4.1	3.4	2.7	3.5	2.9	2.7	
5.0	4.2	4.4	4.4	3.6	2.7	
5.9	5.6	1.1	1.9	3.3	1.6	
5.9	5.6	1.1	4.6	4.1	5.0	
5.8	3.8	3.5	5.8	6.5	6.1	
3.0	2.3	3.3	2.9	5.7	2.9	
6.9	6.1	4.0	6.6	8.2	9.0	
5.4	0.8	3.6	5.4	4.6	4.3	
4.1	0.2	2.3	5.3	3.6	1.7	
5.8	2.6	-0.9	-1.6	-0.5	-1.5	

.247 2001 :

:(Plein-emploi) .2

**2000-1995** :2  
%

2000	1999	1998	1997	1996	1995	
4.0	4.2	4.5	5.0	5.4	5.6	..
4.7	4.7	4.1	3.4	3.3	3.1	
7.8	8.3	9.0	9.5	8.6	7.9	
9.7	11.3	11.6	12.5	12.4	11.7	
10.6	11.4	11.8	11.7	11.6	11.6	
5.6	6.0	6.3	7.1	8.2	8.7	
6.8	7.6	8.3	9.1	9.6	9.4	

.249 2002 :

:(Stabilité des prix) .3

:(Equité dans la distribution des revenus) .4

. (SMIG)

:(Equilibre de la balance des paiements) .5

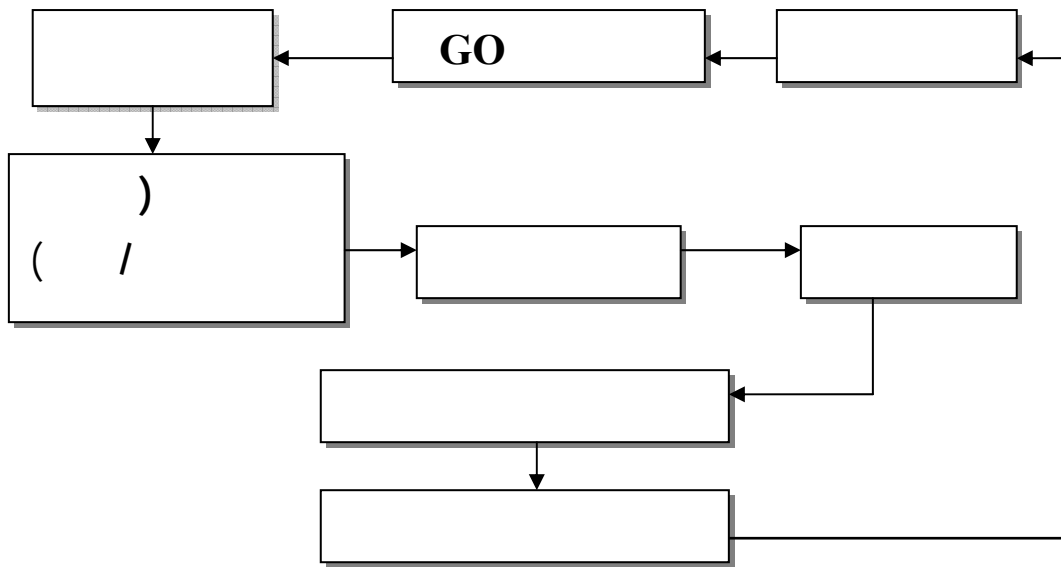
:3

2000	1999	1998	1997	1996	1995	
-36714.0	-5886.2	-11129.6	-15306.4	-5909.7	-7263.6	
1111.9	925.8	179.8	703.9	122.8	279.8	
2834.6	1530.4	751.8	623.8	621.0	757.4	
200.0	25.5	-16.8	102.7	-6.4	168.9	
-242.4	689.6	-187.0	337.0	396.0	80.0	
7570.0	-2380.0	-1530.0	1160.0	-2080.0	-6330.0	
-20.1	8.5	-8.0	-12.0	-34.2	-10.0	
12059.0	-8897.2	-7760.0	8009.9	-8390.9	-2839.8	
124.8	11.5	25.1	-36.2	37.5	63.1	
541.0	259.0	434.0	449.0	983.9	840.6	
/	/	/	/	/	/	
/	/	/	/	/	/	
/	-171.6	-1516.2	-689.3	-80.6	-494.1	
1880.4	2457.7	-48.1	-487.6	-524.2	-836.8	
2265.4	926.5	200.1	-56.0	-86.8	-57.0	
701.0	266.0	-488.0	420.0	786.0	256.0	
6034.1	525.1	-410.8	1851.8	1460.2	1989.1	
-1306.6	-4027.4	-535.4	1192.3	998.3	409.9	
-745.0	1638.6	247.4	553.0	292.0	-982.0	
-23.1	-43.1	-11.7	-13.8	-11.6	-6.1	
1240.6	268.9	455.5	116.4	-392.7	-552.6	

. 353 2001

:

:(  
:  
:  
:(  
:(KEYNES)  
.....  
:  
:(Déflation)  
:(Stop and go)  
:1



Source: B.J. GELEDAN; Dictionnaire économique et social. e<sup>d</sup> Hatier, Paris, 1981, P311.

: .1

: .2

: .3

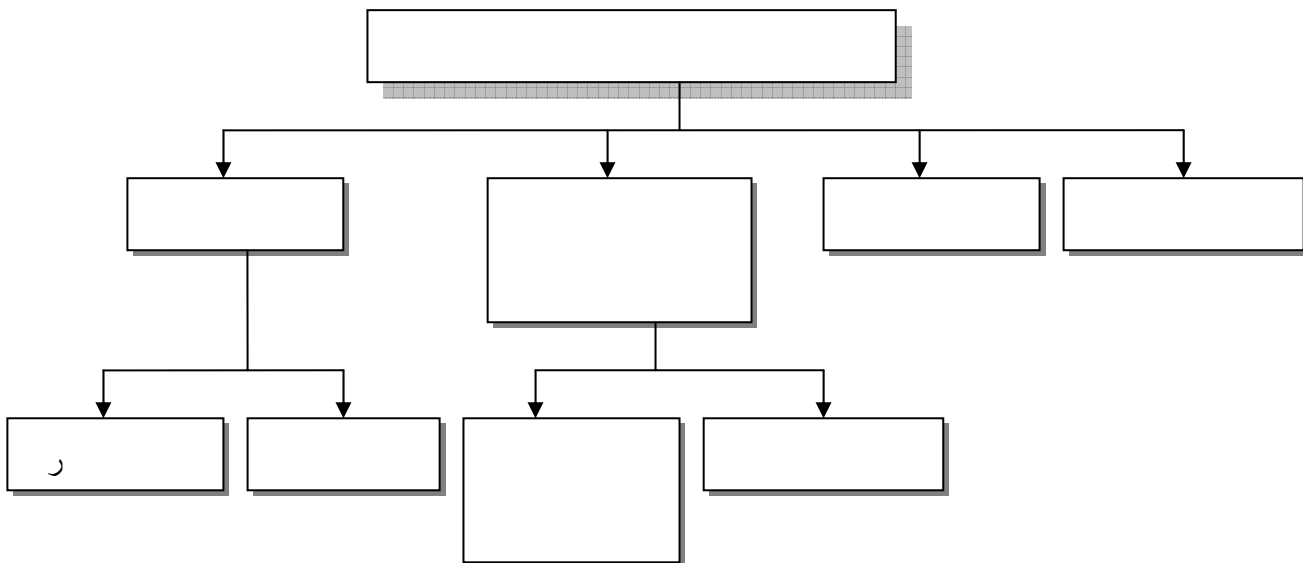
:

: ■

: ■

: .4

:2



.42 1997

:

:

-2

18

:

:

○

:

○

:

○

1919

(BIT)

1992 1961

(1992-1973)

( )

:4

(% )

1992-81	1981-73	1973-61	
1.14	1.11	1.88	:
1.81	1.55	2.94	
1.16	1.20	1.72	
0.15	0.21	0.61	:
2.52	0.53	1.14	
0.57	-0.10	1.73	
1.16	0.89	1.13	
0.38	0.71	0.43	

Source: Statistics Canada -United States. Department of commerce, bureau of economic analysis.

(PNB)

: Keynes

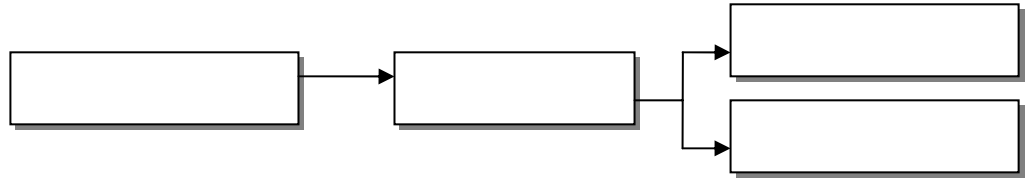
$$Y = C + I$$

(Le multiplicateur)

1931

KAHN

:3



: •

" "

: •

...

: -3

2001 :5

6228772	2683406	3590366	
1826020	844311	981709	
2750793	750104	1820690	
1306407	699936	606411	
525552	344055	181497	
2339449	884108	1455341	
8568221	3552514	5045707	
%27.30	%25.10	%28.84	

.2001 :

2000

2003

2510682

2339449

2001

. %28.89

%27.30

2000



:6

<b>1312069</b>	<b>1043020</b>	<b>269049</b>	
<b>819119</b>	<b>223195</b>	<b>627924</b>	
<b>650012</b>	<b>332784</b>	<b>317228</b>	
<b>3495572</b>	<b>1029407</b>	<b>2376165</b>	
<b>6228772</b>	<b>2683406</b>	<b>3590336</b>	

2001 - ONS :

%60                      %51.35                      (20)                      ○

. 30                      %71 ○

:7

%:

<b>2001</b>	<b>2000</b>	<b>1998</b>	<b>1997</b>	<b>1996</b>	<b>1995</b>	<b>1994</b>	
<b>27.30</b>	<b>28.89</b>	<b>29.5</b>	<b>28.66</b>	<b>27.99</b>	<b>24.8</b>	<b>24.4</b>	

:

:

•

:

•

1994/05/26

94/11

22

45

13

. ( CATI

-CRE

)

03

: CRE

○

:CATI

○

- )

05 ( )  
:ANSEJ •  
1996/09/08 296/96

:  
(Dotation) ○  
○  
○

:CNSEJ •  
1996

.ANSEJ

2000 1987  
. 2000 PNDA

:ESIL •  
1990

(FACJ)

(CNSEJ) 1996

.%4 %3

: TUP.HIMO

(ADS)

2562 2003/06/30 8282 176778 3000

(ANEM)

:CPE

1990/09/08

98/402 1998 1998/12/02  
12 6

:8

( 6)	( )	
/ 4000	/ 6000	
/ 3000	/ 4500	

2003 8506

% 13

1994/07/06

1994

2003/12/31

%94.52

188411

199328

. %97.94

184159

1994/12/26

11/94

(Contribution d'ouverture de droit ) COD

			:	
	3			○
			.	
(COD)				○
. (%50-%60-%80-%100)				
			:	●
1990				
		1994		
1994				
				1995 .
			.	
			:	○
	%30 %40		%30	
	1997		:	○
				1998
	7872			
		2003		3020
19			:	●
				60
				○
		%5		○
			%2	○
			4	○
				○
				○
			06 " "	-
	%70			-
.UE				-

	(... - PME)		:
			.1
		.41-29 2003	
.49 1973			.2
.95 2003			.3
.2001		:ONS	.4
.219 2			.5
.26 2004			.6

7. **BERNARD GAZIER**; Emploi nouvelle donne. E<sup>d</sup> Economica, Paris, 1993, P102.
8. **DAVID MARSSDEN**; Marchés du travail : Limites sociales des nouvelles théories. E<sup>d</sup> Economica, Paris, 1989.
9. **B.M.MORIE et A.R.DURANT**; Chômage relance de l'emploi. E<sup>d</sup> Economica, Paris, 1997, P13.
10. Recueil textes ressort les programmes sociaux par LADS, 2001, P252.