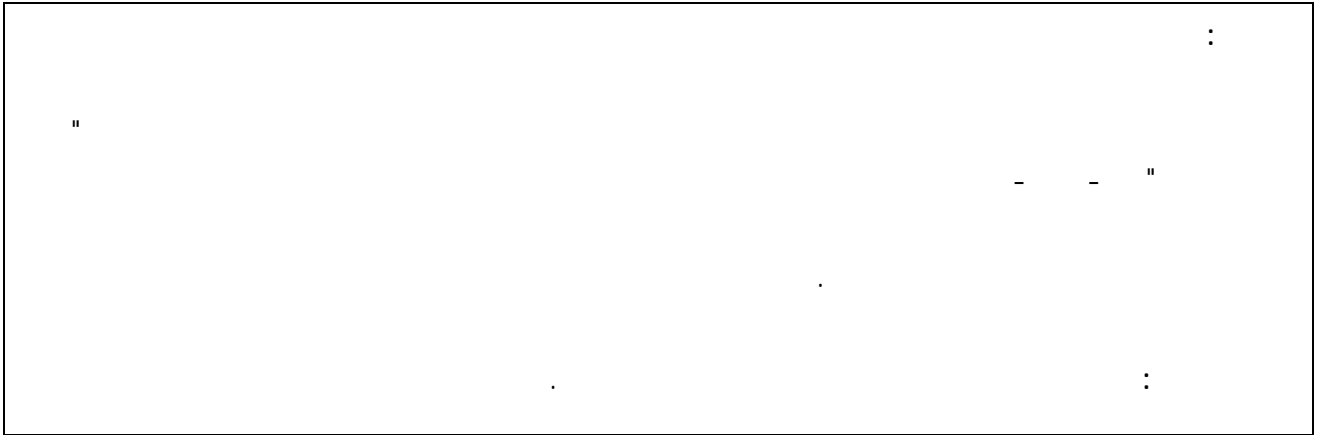


:

:

-



:

"

- - "

:

:

"

"

.

:

:

:

.1

.2

.3

:

-1

:

:

.1-1

:

.2-1

1

:
: **Feeder(1983)²** •

: ³ **Balassa(1991)** •

: ⁴ **Sachs- Warner(1995)** •

:
%40 %40
:
%20
2.5-2

36 : ⁵ **1987** •
1986 -1946 19

:
.
.
.
.

67 (2000-1970) (2003) 130 01

				:
1990-1970	23	54	68	
()	
			200	
		.2000-1990	27	16
				:
				<u>-2</u>

. 6

.

:

.1-1

7

.2-1

1 (2002)

1 " 2 " (2004)

2001 1990 02 1.1

(2004)

.2001-1990 (1) 140

:

-

()

-

-

-

()

()

-

:

.3-1

8

Stolper-Samuelson

03

9

%30

2002

()

%55

:

.3-1

:

10

04
.2000 14- 05

250
32

61

120
7

80

73

14

90

()
5 (1996)
2 1

. 11

: -3

. 12

. 13

: .1-3

: .1-1-3

()

. 14

_____ :

15

: **.2-1-3**

. 16

-

()

-

()

-

17

. 18

-

: **.2-3**

19

01

"

: **.3-3**

"

()

02

: .4-3

: .1-4-3

2007

20

.2003- 1990

05

: .2-4-3

127384

()

2003

.2005

03

()

%45 (2003 - 1990)

:

:

"

:

-

-

-

-

-

-

-

:

-

-

-

-

-

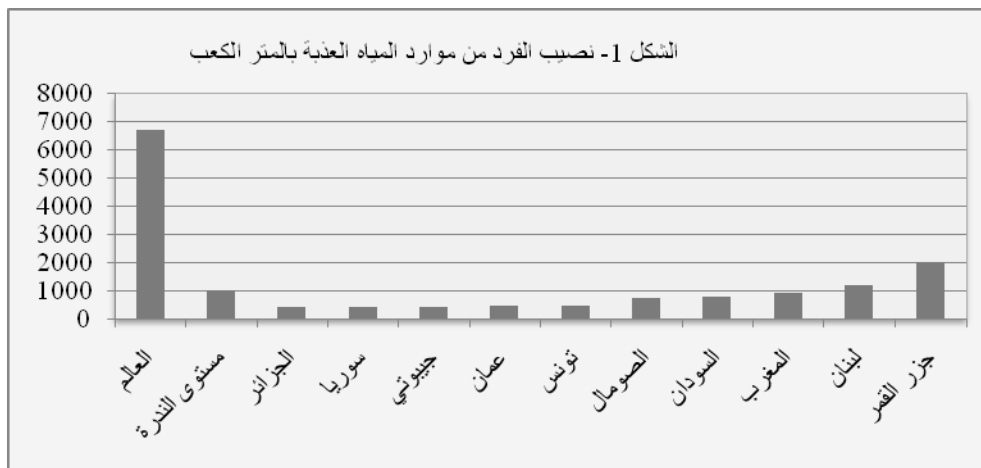
.(2002-1970) .				_ 1
(01)			- 2	
			1990	2001
			29,6	15,6
			33	16,6
			0,5	3,7
			11,3	9,5
			1,6	2,4
			40,1	31,1
			44,6	46,5
Source : United Nations, The Millennium Development Goals Report, 2004				
5,925047	0,1208429	3,011093	3,131936	
6,868487	0,7030215	3,342062	4,045084	
8,915795	-0,6163757	3,545621	2,929245	
8,88637	-0,4002583	5,085757	4,685499	
7,900435	0,0796521	4,650002	4,729654	
6,799729	-0,02 10225	3,907734	3,886711	
8,366213	-0,3556762	3,248068	2,892391	
Source: Banque Mondiale, World Développement Indicators, , 2003				

-3							
	PIB						
			%10	%50	01	2	
			%10				
..	34.320	40.8	16.6	17.00		0.3*	
	29.000	24.7	8.1	9.2			
	25.350	38.2	14.2	7.5		7.3*	
	24.170	25.0	5.9	6.6		6.3*	
	24.160	36.1	13.4	12.5		15.7*	
	14.720	25.4	5.2	4.9		12.6	
	11.290	59.3	65.1	11.5	35.8	12.6	
	7.100	48.7	20.3		7.0	25.1	
	7.360	59.1	65.8		9.9	25.3	5.1
	4.020	40.3	12.7		18.5	53.7	
	2.490	31.7	7.8		7.7	55.3	15.7
	2.730	37.9	9.5	34.7	79.9	45.4	
	980	44.5	15.6		26.5	62.3	27.3
	810	60.5	26.2		72.8	90.5	75.1
	1.610	33.6	6.8		29.1	77.830.0	
2003 :							

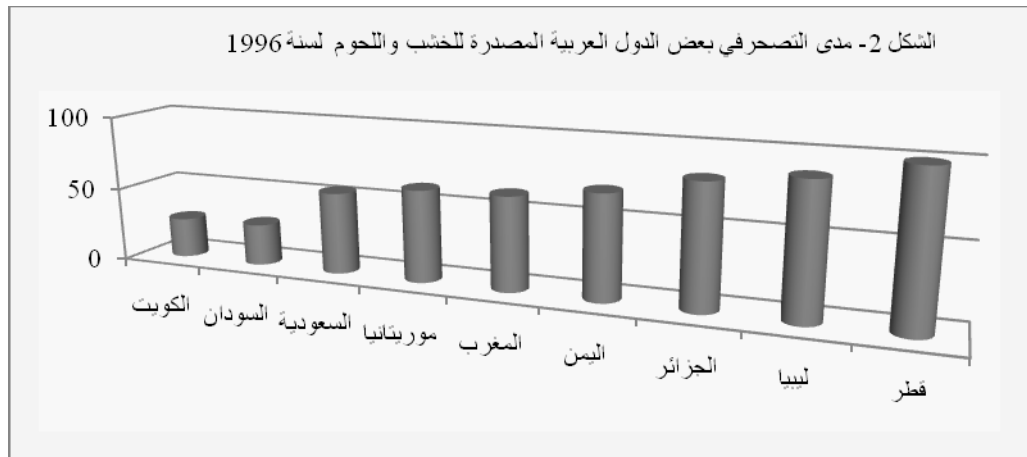
2000 14 -05 - 4			
	()	%	%
	2.5	01	02
	2.4	01	04
	127.3	60	19
	17.4	08	16

	48	23	29
	13.4	06	16
	211	-	16
	19 2002	:	

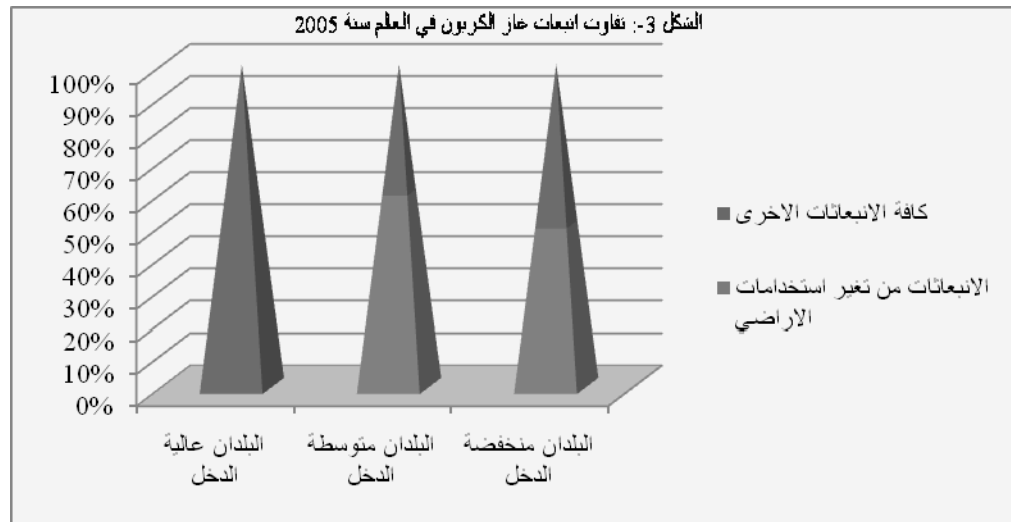
2003- 1990		- 5	
() 1990	() 2000	() 1990	() 2003
..	2562.2	1805.2	0.15
	1991.3	1388.1	0.13
	211.5	1.186	0.2
	107	0.25
	44.6	55.8	0.18
	41.7	72.1	0.14
	26.7	0.14
	21.7	15.1	0.22
	18.5	...	0.15
	9.1	11.9	0.16
	61 2009	:	



المصدر: تقرير التنمية الإنسانية العربية للعام 2009 ، ص 54



المصدر: تقرير التنمية الإنسانية العربية للعام 2009 ، ص 57



المصدر: تقرير عن التنمية في العالم 2010، التنمية وتغير المناخ ، البنك الدولي ، ص 15

1. bertrand Blancheton, Ouverture commerciale, croissance et développement : malentendus et ambiguïtés des débats, Journée du développement du GRES : Le concept de développement en débat, 16-17 septembre 2004, p09.

. 255 2007 .2

. 38 2006 .3

4. . Gilbert NIYONGABO , POLITIQUES D'OUVERTURE COMMERCIALE ET DEVELOPPEMENT ECONOMIQUE, du Doctorat en Sciences Economiques, Université d'Auvergne, Clermont-Ferrand I,2007, p19.

5. .the.World Bank , world développement report, 1987, p 82-83

.85 1989 .6

. 7

64 2005

8. .Amanda Jakobsson Trade Openness and Income Inequality, département of Economics Bachelor Thesis.school of economics and management, Lund university,2006,p10

9. .Elena Meschi and Marco Vivarelli , TRADE OPENNESS AND INCOME INEQUALITY IN DEVELOPING COUNTRIES, Centre for the Study of Globalisation and Regionalisation , University of Warwick Coventry CV4 7AL, UK, 2007,p13

.10

.15 004

.50 1998 .11

.05 2001 .12

13. The Significance Of Sustainable Development For Ideas, Tools, And Policy / Vander Bergh, J,C,M, And Vander Straaten J. Washington: Island Press, P0 4.

2003 .14

.203

. . 1992 .15

. %20

	.207	.16
17. W.Beckereman, Economic Development and tue enveronement –cobflit of complementarity, August, 1992,p 21		
	.32	.18
	.32	.19
.149 1978		.20
	19 2002	.21
	54 2009	.22
15	2010	.23